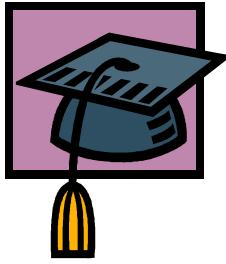


ANNOUNCING.....



**OGLE COUNTY FARM BUREAU  
SCHOLARSHIPS**

**Nine college scholarships of \$2000 each from the Ogle County Farm Bureau will be awarded in 2025.....**

***DEL FLESSNER MEMORIAL SCHOLARSHIP***

For the study of agriculture, agribusiness, or an ag-related major at any recognized university, college or community college in or outside Illinois. This scholarship is awarded in the memory of long-time Ogle County Farm Bureau Manager, Del Flessner.

***OGLE COUNTY FARM BUREAU GENERAL/TECHNOLOGY SCHOLARSHIPS***

Three scholarships will be awarded to qualified recipients. These scholarships will be awarded to individuals who meet all eligibility requirements and are accepted to attend an accredited university, college or community college in or outside of Illinois; and who major in a field of study related to agriculture or agribusiness/technology.

***DON BYBEE MEMORIAL SCHOLARSHIP***

This is a scholarship awarded through the Farm Bureau and funded in cooperation with the Bybee family. It recognizes Mr. Bybee for his years of service as a director on the Ogle County Farm Bureau Board. Successful recipient will need to meet all eligibility requirements and demonstrate financial need.

***MARK DETIG MEMORIAL SCHOLARSHIP***

A scholarship awarded annually and funded by the Farm Bureau and Ogle County Pork Producers Association in memory of Mark Detig who served as past president and director of the pork producers organization. Successful recipient will demonstrate a strong background in youth activities including 4-H & FFA.

***GEORGE R LEFEVRE MEMORIAL SCHOLARSHIP***– This is a scholarship funded by the Jeff & Joyce Tremble Family and the Farm Bureau. It recognizes Mr. LeFevre for his lifetime of service to agriculture and youth education in Ogle County. It will be awarded to a recipient studying in a field of agriculture.

***MARY R LEFEVRE MEMORIAL SCHOLARSHIP***– This is a scholarship funded by the Jeff & Joyce Tremble Family and the Farm Bureau. It recognizes Mrs. LeFevre for her dedicated service in the healthcare profession and involvement with youth education. It will be awarded to a recipient studying in a healthcare related field.

***SUSAN YOUNG MEMORIAL SCHOLARSHIP***—Awarded to a student who meets all eligibility requirement studying in an ag-related field. It recognizes Ms. Young for her dedicated service to agriculture and Farm Bureau in Ogle County.

Applications due April 1, 2025 Contact: Ogle County Farm Bureau 815-732-2231

Must be an Ogle County Farm Bureau Member or Dependent